

FLORIDA DESIGN

THE MAGAZINE FOR FINE INTERIOR DESIGN & FURNISHINGS

FALL 2002

TONY BENNETT
REVEALS HIS ARTISTIC SIDE

TIMELESS DESIGN STYLES



\$5.99US \$7.99CAN

23 >



0 70989 36913 9

URBAN COMFORT

Neutral Tones And Natural Materials Wrap A Contemporary Retreat In Warmth

Cindy West Ray

Cindy Ray Interiors, Inc., Lantana Point, FL

TEXT Jo Werne

PHOTOGRAPHY Robert Brantley, Delray Beach, FL





Streamlined yet warm, the living area features comfortable sofas covered in Giant Fabrics' linen/cotton blend and chairs upholstered in a Donghia woven fabric. Canadian artist Danielle Lanteigne painted the single flower in a vase.



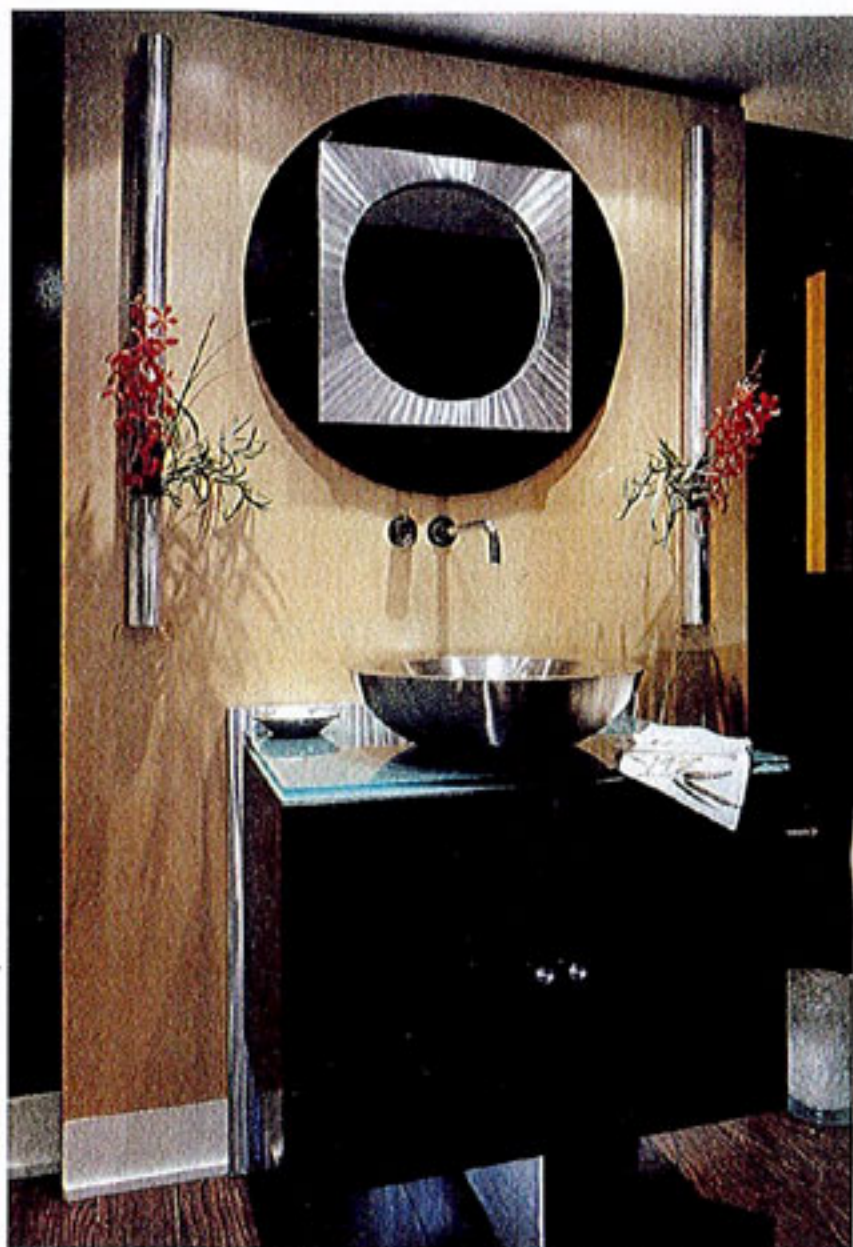
When a Canadian couple decided to buy a winter retreat in Palm Beach, they wanted something different from what they already had. Owners of two homes in Canada — one traditional and one country in style — the couple sought “a warm, comfortable and modern home,” the wife notes.

To fulfill the owners’ desire for a serene waterfront retreat, designer Cindy West Ray created a spacious, uncluttered interior. “The challenge was to give them an environment that was easygoing, informal, and above all, a great place to entertain,” Ray says.

LEFT: A modern bench with a woven seat greets guests in the foyer, where Cindy West Ray designed a mahogany sculpture to camouflage a structural column. Double doors open to the master bedroom.

BELOW: Sliding-glass doors wrap the living area, providing panoramic views from every angle. A corner sitting area comprises armchairs that gather around a cocktail table.





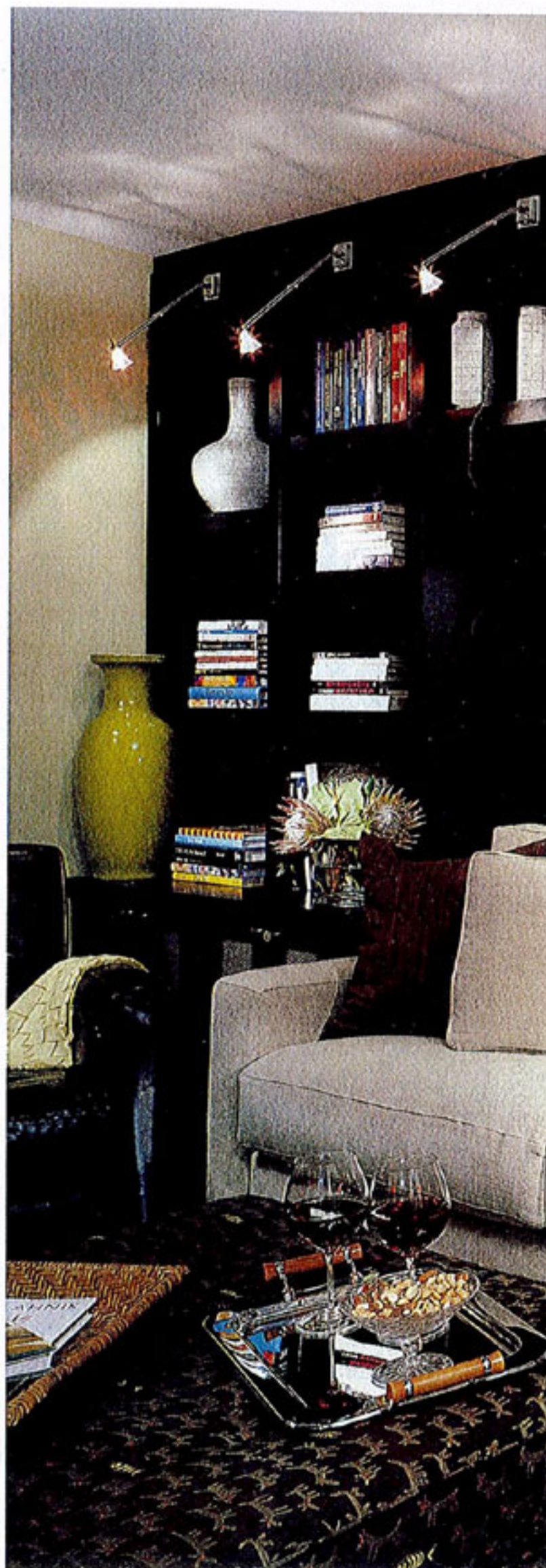
To begin, Ray gutted the entire condominium, eliminating as many walls as possible. "This allowed us the opportunity to redefine the use of all the spaces," she explains. "We were able to work around the existing structure of the building and create a true Great Room in which each area flows seamlessly into the next."

Ray had to work around a pair of structural columns between the living area and kitchen/dining area. So, she designed cherry-wood cabinetry to incorporate the columns and separate the two spaces.

A warm combination of taupe, putty and chocolate brown, punctuated with subtle gradations of

ABOVE: Hunter-green lacquered walls frame a maple-paneled wall in the powder room. A stainless-steel sink and mirror and stainless-steel tube vases gleam in the light.

RIGHT: The den/library functions as a home office and a guestroom. Palm prints fit within a niche in the cabinetry, reminding one of the home's Florida location. A cat/dog/fish motif on the ottoman adds a whimsical touch.







chartreuse, establishes the home's palette. Furnishings such as the cotton/linen-covered sofas, glass occasional table, dark limed-oak cocktail table and leather ottomans add texture and dimension.

Ray camouflaged a structural element in the foyer with a mahogany sculpture that she designed to fit the

space. Double doors with aqua-colored, sandblasted glass panels open to the master bedroom.

Dark wood pieces reappear in the dining area, where chairs with metal legs surround a mahogany table.

Near the foyer, the powder room doubles as a guest bath. Here, ebony-stained maple, stainless steel and



glass come together to form the cabinetry.

One of the guestrooms was transformed into a den/library, which also serves as a home office for the husband. Ebony-stained cabinetry with perforated stainless-steel panels provides the backdrop for an inviting sofa and leather chair.

ABOVE: The kitchen is full of design surprises, such as the countertops made of Silestone — cement mixed with taupe and beige stones. The glass-tile backsplash with a checkerboard pattern references the colors of beach glass.

In the dining area, Ray placed a print of an open door that symbolizes the open feel of this newly renovated apartment. A white bowl and vases pop against the mahogany table.

